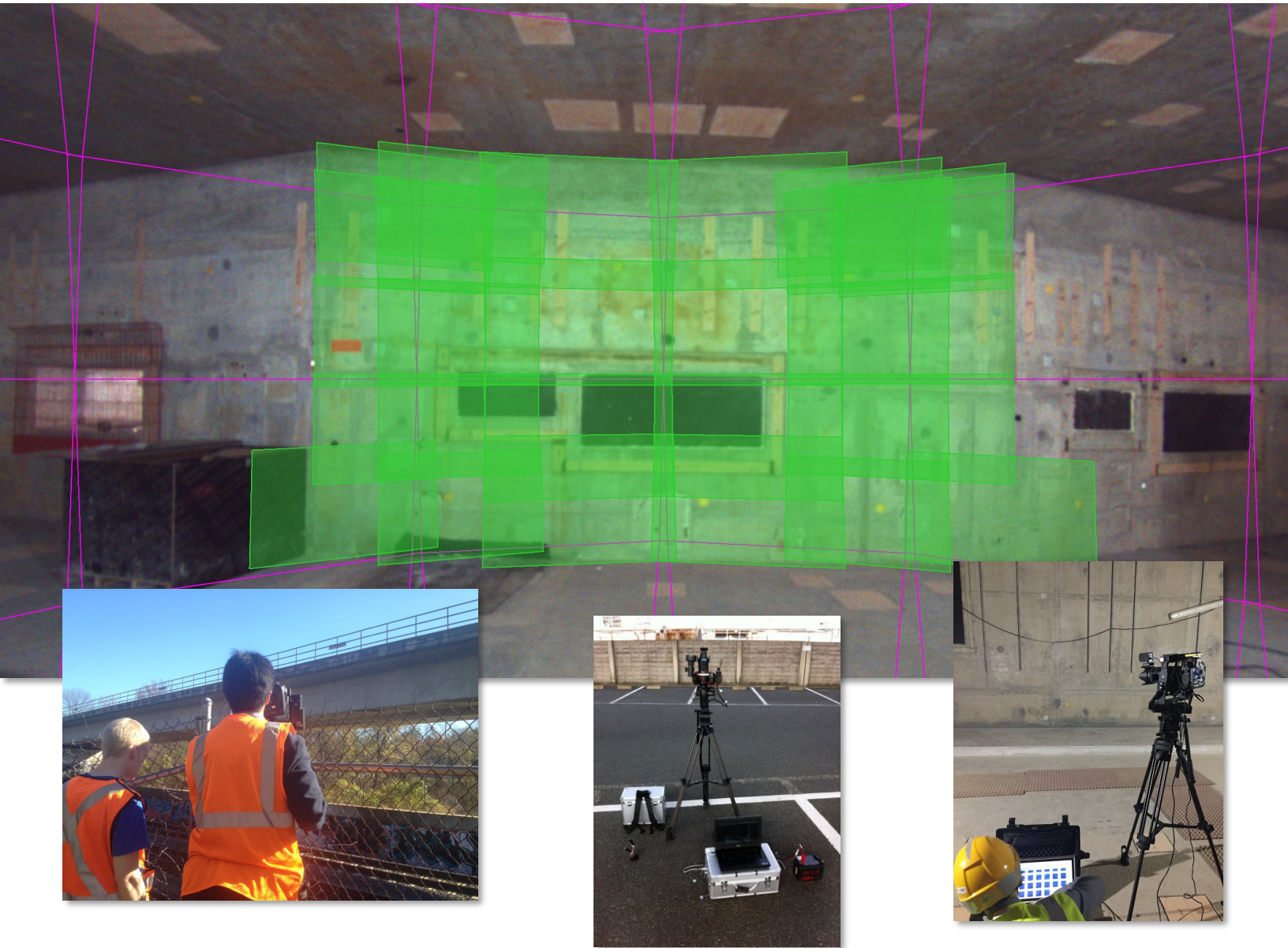
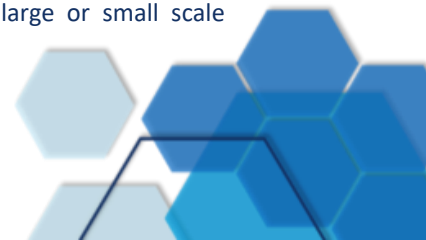


# Automatic Camera System (ACS)



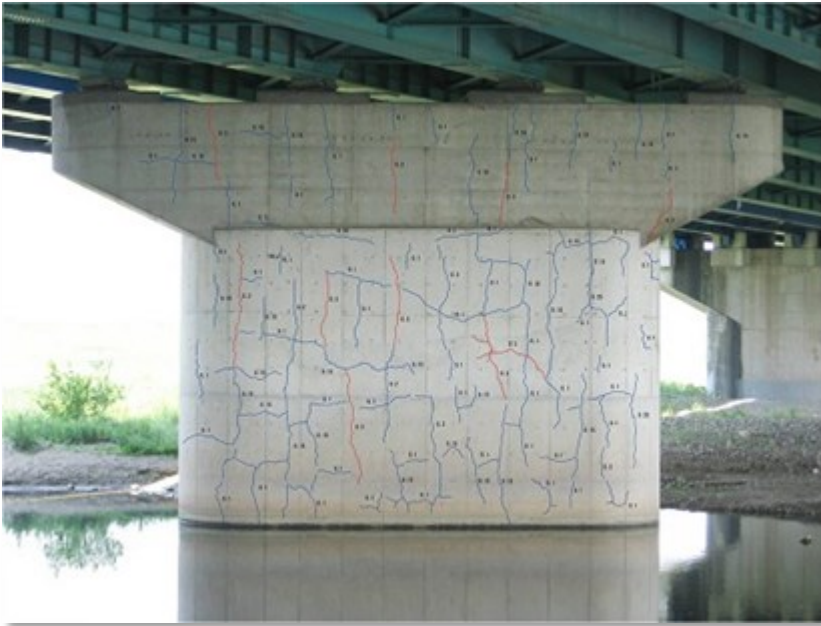
## What is ACS?

**Automatic Camera System (ACS)** is an automatic visual imaging system composed of a high-end digital camera mounted on a motorized frame capable of taking high-definition pictures from far distances, seamlessly stitching them together with applied distortion correction. With a minimum detectable crack width of 0.004" (0.1 mm), the system can be used to track changes in cracks and other deficient areas in large or small scale structures; such as buildings, dams, industrial walls, etc.

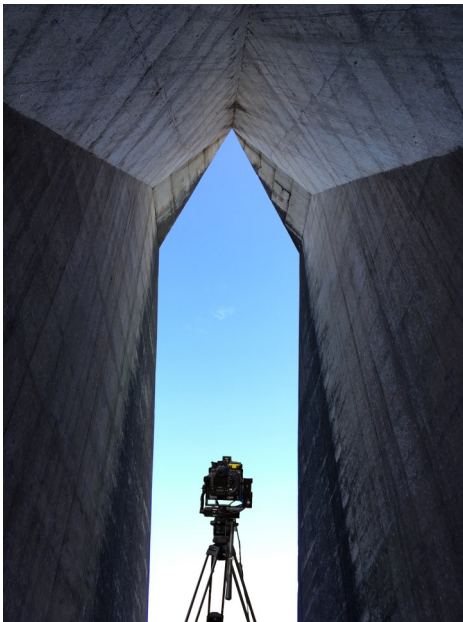


## Benefits of using ACS

The **Automatic Camera System (ACS)** is designed to produce data for detailed crack analyses. This system provides an alternative to unsafe and costly forms of visual inspection, such as rappelling down dams or raising scaffolding along building façades. Furthermore, the post-analysis crack evaluation software reaches a level of accuracy which enables the measurement of crack propagation over time.



## Technical Specifications



Minimum Detectable Crack Width (at max 120 ft)	0.004" - 0.1mm
Pan Range	±45°
Tilt Range	±30°
Shutter Type	Electronically controlled vertical-travel focal-plane
Distometer Model	Leica DISTO D8
Lens Model	Nikon 70-200mm - Nikon 300 mm
Camera Model	Nikon D3S, D4S
Teleconverter Model	Nikon AF-S TC-20E III
Effective Pixels (Megapixels)	12.1 million
Pixel Size for Sensor	36/4256 mm
Sensor Size	36mm x 23.9 mm
ISO Sensitivity	200—12,800
LED Lighting	1,000 lumens
Maximum Recommended Shooting Distance	500 ft - 150 m

+1 (703) 734 - 0281  
info@w-nexco-usa.com  
www.w-nexco-usa.com

**NEXCO - West USA**  
8300 Boone Blvd. Suite 260  
Vienna, VA 22182

